



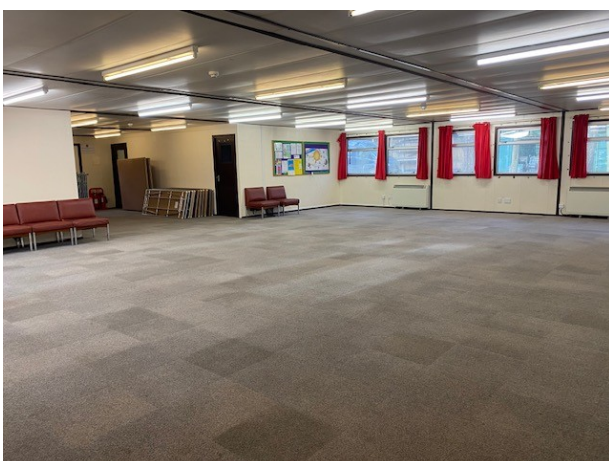
## The Scout Centre

Maximum capacity during the day: 140 people

Maximum capacity overnight: 40 people

40 people included in the price of Scout Centre hire

- Fully equipped kitchen—see next page
- Large 6 burner cooker with oven, double sink and drainer, hand wash sink, fridge, freezer, hot water burco, kettle and microwave
- Food cupboards and work surfaces
- Versatile large main room with tables and chairs. Please keep these inside the building
- One bunk room (sleeps 12) with mattresses. Own bedding required
- Side room which can be converted into two smaller rooms
- One leader room with two single beds
- Dedicated indoor toilets and showers (separate male and female) plus one disabled access toilet with own shower
- Hot water is supplied via a hot water tank. When completely drained, it takes approximately 30 minutes to refill and reheat
- Storage heaters make it suitable for use throughout the year. Heating is currently disabled from April to September to conserve energy and cost
- Please familiarise yourself with the Scout Centre rules





### Kitchen

Microwave	Toast racks
Fridge (leave switched off when not in use)	Teapots
Freezer (leave switched off when not in use)	Trays
2 Kettles	50 mugs
Urn	60 cups
Double sink	36 x forks, knives, spoons
Handwash only sink	36 x teaspoons
Large oven	40 x bowls
6 ring hob	40 x large plates
Fire blanket	40 x small plates
Fire extinguisher	Sieve
Saucepans—2 large, 4 medium, 4 small	Toaster
5 frying pans	Extractor fan
9 Jugs	12 baking trays
6 large bowls	Rolling pin
2 Colanders	3 pan stands
Knives—3 small, 3 large	Oven gloves
40 plastic cups	Mop and bucket
6 pairs of scissors	First aid kit
2 tin openers	Washing up liquid
2 bottle openers	Washing up bowls
Peeler	Washing up rack
2 spaghetti spoons	2 x Dustpan and brush
2 large slotted spoons	Bin
2 small slotted spoons	Cupboard storage
6 Chopping boards	1 broom
2 ladles	Cleaning materials
4 tongs	
4 fish slices	
2 whisks	
2 graters	
2 potato mashers	

### Toilets

Gents—2 toilets, 2 urinals, 3 sinks, 2 showers

Ladies—3 toilets, 4 sinks, 2 showers

Disabled toilet—toilet, sink, shower, assistance bars and handles, cleaning cupboard

### Entrance Hall

Coat hooks

Shoe/boot rack

Fire extinguisher

### Main Hall

4 x Fire extinguishers

Cleaning cupboard with cleaning materials

9 comfy chairs

Dividers/room partitions

Small table

TV, remote, cable (need to bring own speakers)

Table football

10 large tables

98 folding chairs

Hot water switch (please leave off when not in use)

### Bunk Room

6 bunk beds (12 beds) with mattresses

### Side Room

Divider to split the room into two

### Leaders' Room— lockable

2 single beds with mattresses

Chair

2 bedside tables and lamps



## BUILDING RULES – ALL USERS

### SCOUT CENTRE

- Always consult your own risk assessment before you start any activities in the building.
- No ball games are allowed in the Scout Centre.
- Tables & Chairs **MUST NOT** be removed from the Scout Centre and taken outside for any reason. There is plenty of outdoor furniture for your use.
- In order to keep the building clean, please ensure all outdoor footwear is removed.
- All waste materials including recycling **MUST** be removed from site at the end of your visit.
- Ensure that all taps and lights are turned off as well as the heating and hot water switch before you depart.
- The building must be left clean and tidy, hoovers are provided.
- Please do not leave **ANY** food in cupboards or fridges.
- The kitchen comes fully equipped so please check that you have not removed any kitchen equipment by mistake.

**Please report any problems, concerns, damage to Earleywood via email when you leave**  
[bookings@earleywood.org.uk](mailto:bookings@earleywood.org.uk)